



Conext SW Inverter/Charger

The Conext™ SW solar inverter/charger delivers new value and a new price point to the marketplace in 2013. Conext SW is a pure sine wave, inverter/charger system with switchable 50/60 Hz functionality available for both 120/240 Vac or 230 Vac models.

North American units feature split-phase input and output without the need for an external transformer. Available DC and AC switchgear panels, display control panel, remote monitoring and automated generator control modules present even more value. Stacking Conext SW units will double the power and available solar charge controllers allow for the integration of solar capacity as required.

> Features

Easy to Install

- Configures quickly into compact wall-mounted system
- Companion switchgear integrates inverter with battery bank and solar charge controllers

Flexible

- All models support both 50 Hz and 60 Hz output
- All models support stackable power

Easy to Service

- Remote monitoring and configuration
- Global support

Higher Return on Investment

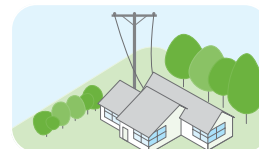
- Cost-effective residential and community system
- Harness the continuously declining production cost of solar power

> Compatible Schneider Electric Products

- Conext CM Communication Device, Product Number (P.N.) 865-1058
- AC Breaker Panel (230 V), P.N. 865-1017-61
- Automatic Generator Start (AGS), P.N. 865-1060
- AC Breaker Panel (120/240 V), P.N. 865-1017
- Universal DC Breaker Panel, P.N. 865-1016
- System Control Panel (SCP), P.N. 865-1050
- MPPT 60 150 Solar Charge Controller, P.N. 865-1030-1



> Product Applications



Residential Backup Power



Residential Off-grid Solar with Battery Backup



Community Electrification

Device short name	SW 2524 120	SW 4024 120	SW 2524 230	SW 4024 230
Electrical specifications – inverter				
Output power continuous	2,000 W	3,500 W	2,500 W	3,500 W
Output power (30 min)	2,500 W	4,000 W	2,800 W	4,000 W
Surge rating	4,000 W (5 seconds)	7,000 W (5 seconds)	5,000 W (5 seconds)	7,000 W (5 seconds)
Peak current	23.5 A	41 A	24.3 A	42 A
Output frequency	50/60 Hz selectable	50/60 Hz selectable	50/60 Hz selectable	50/60 Hz selectable
Output voltage	120/240 Vac	120/240 Vac	230 Vac	230 Vac
Output wave form	True sine wave	True sine wave	True sine wave	True sine wave
Optimal efficiency	91.5%	92%	91.5%	92%
No-load power draw (inverting)	38 W	40 W	38 W	40 W
Input DC voltage range	20 – 34 Vdc	20 – 34 Vdc	20 – 34 Vdc	20 – 34 Vdc
AC connections	Single-/Split-phase	Single-/Split-phase	Single-phase	Single-phase
Electrical specifications – charger				
Output current	65 A	90 A	65 A	90 A
Nominal output voltage	24 Vdc	24 Vdc	24 Vdc	24 Vdc
Output voltage range	12 – 32 Vdc	12 – 32 Vdc	12 – 32 Vdc	12 – 32 Vdc
Charge control	Three-stage	Three-stage	Three-stage	Three-stage
Charge temperature compensation	Yes – BTS included	Yes – BTS included	Yes – BTS included	Yes – BTS included
Optimal efficiency	90%	90%	90%	90%
AC input power factor	> 0.98	> 0.98	> 0.98	> 0.98
Input current	10 A	14 A	10.6 A	14.0 A
Input AC voltage	120/240 Vac split-phase	120/240 Vac split-phase	230 Vac	230 Vac
Input AC voltage range line to neutral	78 – 140 Vac	78 – 140 Vac	170 – 280 Vac	170 – 280 Vac
Dead battery charge	Yes	Yes	Yes	Yes
General specifications				
Compatible battery types	FLA, Gel, AGM, Custom	FLA, Gel, AGM, Custom	FLA, Gel, AGM, Custom	FLA, Gel, AGM, Custom
Transfer relay rating	30 A	30 A	25 A	25 A
Transfer time (AC to inverter and inverter to AC)	< 1 cycle (16.7 ms)	< 1 cycle (16.7 ms)	< 1 cycle (20 ms)	< 1 cycle (20 ms)
Optimal operating temperature range	-20 °C to 60 °C (-4 °F to 140 °F)	-20 °C to 60 °C (-4 °F to 140 °F)	-20 °C to 60 °C (-4 °F to 140 °F)	-20 °C to 60 °C (-4 °F to 140 °F)
Storage ambient temperature range	-40 °C to 85 °C (-40 °F to 185 °F)	-40 °C to 85 °C (-40 °F to 185 °F)	-40 °C to 85 °C (-40 °F to 185 °F)	-40 °C to 85 °C (-40 °F to 185 °F)
Product weight	22.7 kg (50.0 lb)	30.4 kg (67.0 lb)	22.7 kg (50.0 lb)	30.4 kg (67.0 lb)
Shipping weight	25.6 kg (56.0 lb)	32.7 kg (72.0 lb)	25.6 kg (56.0 lb)	32.7 kg (72.0 lb)
Product dimensions (H x W x D)	41.8 x 34.1 x 19.7 cm (16.5 x 13.4 x 7.6 in)	41.8 x 34.1 x 19.7 cm (16.5 x 13.4 x 7.6 in)	38.7 x 34.3 x 19.7 cm (16.5 x 13.4 x 7.6 in)	38.7 x 34.3 x 19.7 cm (16.5 x 13.4 x 7.6 in)
Shipping dimensions (H x W x D)	56.0 x 44.0 x 32.0 cm (22.0 x 17.3 x 12.6 in)	56.0 x 44.0 x 32.0 cm (22.0 x 17.3 x 12.6 in)	56.0 x 44.0 x 32.0 cm (22.0 x 17.3 x 12.6 in)	56.0 x 44.0 x 32.0 cm (22.0 x 17.3 x 12.6 in)
System network and remote monitoring	Available	Available	Available	Available
Warranty	Two-year standard	Two-year standard	Two-year standard	Two-year standard
Part Number	865-2524	865-4024	865-2524-61	865-4024-61
Regulatory approvals				
Safety	c(CSA) U.S. mark CSA C22.2 No. 107.1-01 UL 1741 Ed. 2	c(CSA) U.S. mark CSA C22.2 No. 107.1-01 UL 1741 Ed. 2	CE mark RCM mark IEC/EN 62109-1 IEC/EN 62109-2	CE mark RCM mark IEC/EN 62109-1 IEC/EN 62109-2

Specifications are subject to change without notice.

Schneider Electric USA

1415 S. Roselle Road
 Palatine, IL 60067
 Tel: 847-397-2600
 Fax: 847-925-7500
 www.schneider-electric.com